

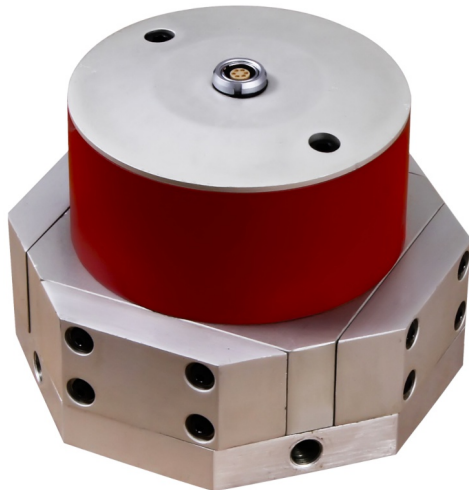
## PFM Fuel Flow Meter

Our flowmeter has been specifically developed for the measurement of fuel consumption in test mode and on the test bench.

The PFM is suitable for all kinds of fuels and hybrid drives.

The small and easy to handle PFM features leak-proof connections and seals. It provides CAN bus and digital signal outputs.

The measured data can be evaluated in various ways to determine the typical fuel consumption during idling, accelerating, braking or constant driving speed.



*PFM-150 sensor*

### Features

- high measurement resolution
- suited for gasoline, diesel, biodiesel and alcohol fuels
- leak-proof quick-lock couplings, fuel resistant seals and hoses
- CAN bus, RS232, digital signal output
- easy installation

### Application

The field of application ranges from two-wheelers, to cars, trucks, buses and special vehicles.

The high measurement resolution guarantees precise results, especially in the field of modern hybrid drives.

### Technical data

Measuring range:	0.3 - 150 l/h
Measuring accuracy:	1500 pulses/ccm, ± 0.5 % of MV
Resolution:	0.33 ml
Fuel delivery rate:	150 l/h max.
Operating pressure:	5 bar max.
Signal output:	CAN-bus, digital
Power supply:	10 - 30 VDC
Dimensions (WxLxH)	
· Sensor:	170 x 215 x 115 mm
· Heat Exchanger:	194 x 245 x 140 mm
· Signal processor:	120 x 111 x 55 mm
Weight	
· Sensor:	2500 g
· Heat Exchanger:	6500 g
· Signal processor:	400 g

### Scope of delivery

• PFM-150	Art.No. <b>1500</b>
• PFM-150 H (heat exchanger)	Art.No. <b>1501</b>
• Signal processor	included
• Cable set	included
• Tube set 11.5 mm, filter 5 bar	included
• Carrying case	included

### Optional accessories

Accessories and spare parts on request.



*Heat exchanger*